



MATATIELE
LOCAL MUNICIPALITY

MATATIELE LOCAL MUNICIPALITY

Research and analysis of ward profiling: Ward based plans

WARD 2

May 2018

TSHANI
CONSULTING C.C.

Contents

1. Executive Summary of Ward4

2. Methodology.....5

3. Ward Overview.....5

4. Socio Economic Analysis6

5. Built Environment Assessment..... 12

6. Current Projects 16

7. Ward Needs and Priorities 16

8. Stakeholder within Ward 17

9. Social Challenges within Ward..... 17

List of Figures

Figure 1: Gender Distribution	7
Figure 2: Age within Ward Distribution – Census 2011	7
Figure 3: Language Proficiency within Ward – Census 2011	7
Figure 4: Gender of Household Head - Census 2011	8
Figure 5: Individual Monthly Income - Census 2011	11
Figure 6: Access to Solid Waste Removal - Census 2011	12
Figure 7: Source of Water supply within the Ward - Community Based Planning Program 2017 (Data Collection)	13

List of Tables

Table 1: SWOT Analysis - Community Based Planning Program 2017 (Data Collection)	5
Table 2: Major Event in Ward: Community Based Planning Program 2017 (Data Collection)	6
Table 3: Programmes within the Ward – Community Based Planning Program 2017 (Data Collection)	6
Table 4: Population Size and Distribution within the Ward – Community Based Planning Program 2017 (Data Collection)	6
Table 5: Social Grant Dependency within Ward - Community Based Planning Program 2017 (Data Collection)	8
Table 6: Child and Female Headed Households within the Ward - Census 2011	8
Table 7: Education Facilities within Ward - Community Based Planning Program 2017 (Data Collection) ..	9
Table 8: Churches and Religious Organisations within the Ward - Community Based Planning Program 2017 (Data Collection)	9
Table 9: Health Care Facilities: Community Based Planning Program 2017 (Data Collection)	9
Table 10: Community Halls - Community Based Planning Program 2017 (Data Collection)	10
Table 11: Economic Activity - Community Based Planning Program 2017 (Data Collection) Tourism Activities	11
Table 12: Tourism Activities - Community Based Planning Program 2017 (Data Collection)	11
Table 13: Agricultural Activities - Community Based Planning Program 2017 (Data Collection)	12
Table 14: Products produced within the Ward	12
Table 15: Existing Skills within the Ward: Community Based Planning Program 2017 (Data Collection) ..	12
Table 16: Access to Piped Water within the Ward – community based planning data collection(2017) ..	13
Table 17: Access to Sanitation – community-based planning 2017	14
Table 18: Source of Energy within Ward – community-based planning 2017	14
Table 19: Roads and Bridges within the Ward - Community Based Planning Program 2017 (Data Collection)	15

Table 20: Current Projects - Community Based Planning Program 2017 (Data Collection)	16
Table 21: Ward Needs - Community Based Planning Program 2017 (Data Collection)	16
Table 22: Ward Priorities - Community Based Planning Program 2017 (Data Collection)	16
Table 23: Stakeholder within Ward – Community Based Planning Program 2017 (Data Collection)	17
Table 24: Social Challenges within Ward – Community Based Planning Program 2017 (Data Collection)	17

List of Plans

Plan 1: Ward Locality Plan	5
Plan 2: Education Facilities	9
Plan 3: Health Care facilities	10
Plan 4: Other Social Facilities	10
Plan 5: Access to Waste Removal - Census 2011	13
Plan 6: Access to piped water within the Ward - Census 2011	14
Plan 7: Access to Flush toilets - Census 2011	14
Plan 8: Use of electricity for Lighting within the Ward - Census 2011	15
Plan 9: Access to Electricity for Cooking - Census 2011	15
Plan 10: Roads and Bridges within the Ward - MLM GIS	16
Plan 11: Ward Priority Plan	18

1. Executive Summary of Ward

Ward 02 comprises of the villages of Malubalube, Nkululekweni, Rockville, Maritseng, Hardenberg and Ramohlakoana. There is approximately a total population of 13575. The gender split within the LM is made up of 54% female and 44% males. The majority of the population is African, and the languages commonly spoken in the ward are primarily Sesotho and isiXhosa. Young people between the ages of 0-20 years constitutes the largest part of ward 02' population. Within the ward, there appears to be a number of female headed households that total to 1629 households. Ramohlakoana shows the minimum number of female headed households. The average household size within ward 02 is 4 persons per households.

Ward 02 is located along the route to Lesotho and close to the Matatiele and Maluti town. The ward has experienced a fair amount of infrastructure investment in facilities, including community facilities, schools, buildings, Low cost housing, water and sanitation amongst others.

However; the roads network in all the villages are in a bad condition. This ward shows a significant number of educational facilities; the recorded facilities are combined, primary and secondary schools. These schools are located in the villages of ward 02.

There are two (2) health care facility located within the ward, in Ramohlakoana and Hardenberg. The health care facility in Ramohlakoana is a Primary Health Centre which mainly provides for basic primary services such as family planning, basic check-ups and immunization among others and Hardenberg for medication. There is also a SASSA hall and Community Hall in Ramohlakoana and Hardenberg respectively.

The majority of people in Ward 02 remove their own waste. The municipality needs to provide a weekly waste collection service to more parts of ward 02. Dumping waste is a hazard to human health and the natural environmental. The local municipality should prioritise this and attend to this matter urgently.

Most of the water in the ward is provided by the district municipality. Ward 02 has approximately 4551 people which have access to piped water inside their yard. However, there are still a number of households or people that do not have access to piped tap water. A number of households still collect their water from the Dam. The district Municipality needs to provide clean and safe water for all its people.

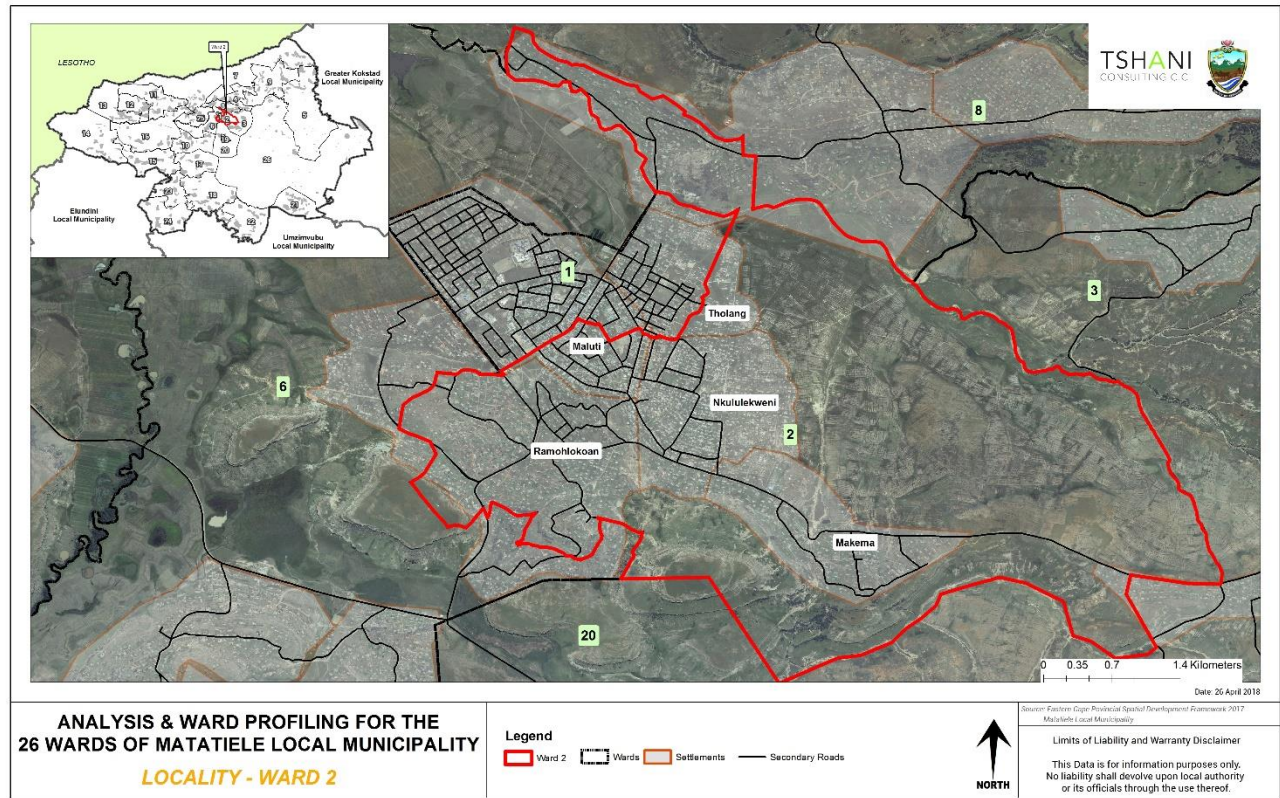
The villages in the ward show that majority use pit toilets with ventilation. The provision of electricity in ward relatively high. The community is reliant on electricity for lighting. Paraffin and electricity is mostly used for heating and cooking respectively. The use of solar energy must be promoted and educating communities on renewable energy is paramount.



The following sections have been identified and populated as part of the analysis for Ward 2. The headings which have been covered are seen as critical topics for the ward analysis. When broken down one can properly understand and interpret the spatial economic status quo and development trajectory of the Ward.

1.1. Locality

Ward 02 is situated in the heart of MLM. The Ward is surrounded by wards 1, 8, 03 and 6. As depicted in the plan below, the main villages within Ward 02 are Hardenberg, Malubalube, Nkululekweni and Ramohlakoana. It is to be noted that all Wards which have been listed were identified through the Community Based Planning Program 2017 (Data Collection). The Village names captured on plans are as per the villages which exist on the GIS and Census databases.



Plan 1: Ward Locality Plan

2. Methodology

The methodology utilised for the analysis and profiling in this report was derived as follows:

1. Synthesis an interpretation of questionnaires and community feedback;
2. Translated information into a Strength, Weakness, Opportunities and Threats analysis;
3. Conducted a verification process on the populations profiles, social profile and economic profile using Census 2011 data which was conducted at a Ward level;
4. A detailed GIS mapping exercise was completed in order to translate the findings into spatially represented outcomes;
5. Ward needs, and priorities were identified for the wards;
6. Needs identified for the ward were translated into projects and a consolidated implementation plan together within financial implications was completed.

The analysis of ward 02 also took its '*point of departure*' from the primary data which was available from the data collection and community consultation completed in the previous phase

3. Ward Overview

The section below highlights the specific sections which were analysed in relation to ward 02.

3.1. SWOT Analysis

The SWOT analysis was developed through a series of engagement session with the local community and traditional leadership of Ward 02, by the municipality.

STRENGTHS <ul style="list-style-type: none"> Ward is situated near to the town of Matatiele and Maluti Most villages are electrified Public transport available Near health facilities and other government institutions 	WEAKNESSES <ul style="list-style-type: none"> Not utilising the resources we have Lack of job opportunities Some villages not have electricity Limited access to water
OPPORTUNITIES <ul style="list-style-type: none"> Sand mining Ploughing fields Quarry Skills people 	THREATS <ul style="list-style-type: none"> Crime Drug abuse Stock theft Domestic violence fires Child abuse

Table 1: SWOT Analysis - Community Based Planning Program 2017 (Data Collection)

3.2. Major events within the Ward

The table below highlights the major event which have taken place within Ward 02 over the last couple of years. The ward has experienced events regarding social challenges as well as natural occurrences.

Mitigation needs to be focused towards disaster management.

EVENT/ OCCURANCE	YEAR	IMPACT
Snow	2012	<ul style="list-style-type: none"> Loss of electricity Low temperatures Restricted mobility Major loss of livestock
Crime	2007- 2017	People live in fear
Road Strike	2017	<ul style="list-style-type: none"> Restricted mobility Affected school attendance Most businesses lost their income generation
Wild fire	2013	<ul style="list-style-type: none"> Communities lost their harvests Conflict among communities
Heavy Rainfall	2013	<ul style="list-style-type: none"> Some houses were destroyed

Land invasion	2012- 2017	<ul style="list-style-type: none"> High Court issued a letter to demolish all houses within the area of invasion (September 2015)
---------------	------------	--

Table 2: Major Event in Ward: Community Based Planning Program 2017 (Data Collection)

3.3. Services/ Infrastructure and Programmes Within The Ward Within The 5-Year Period (2012-2016)

Ward 02 has experienced a fair amount of infrastructure investment in the 2015-16 financial year. It is evident that the benefits of these projects have benefited the ward as well as the municipality as a whole.

Type	Year	Beneficiaries	Status / present condition	Impact
Housing	2014	1 500	Good	<ul style="list-style-type: none"> Job creation Reduction of housing backlog
Bulk water	2014	2 046	Good	<ul style="list-style-type: none"> Not sustainable Job creation Not sufficient on a daily basis
Sewerage system	2014	720	Not functional.	<ul style="list-style-type: none"> System is not connected to household toilets Job creation
Smart meters	2017	1 830	Not good	<ul style="list-style-type: none"> Leaking
EPWP	2013	61	Good	<ul style="list-style-type: none"> Job creation Poverty alleviation
LIMA	2009	79	Good	<ul style="list-style-type: none"> Job creation Reduces crime Poverty alleviation
Nkhoesa Mofokeng	2013	15	Good	<ul style="list-style-type: none"> Job creation Clean communities Halls and access roads maintenance Poverty alleviation

Table 3: Programmes within the Ward – Community Based Planning Program 2017 (Data Collection)

4. Socio Economic Analysis

4.1. Population Profile

The section below an analysis of the population profile of ward 02 occupancy.

4.1.1. Population Size and Distribution

The total population of Ward 02 is 13575. The anticipated population by 2050 based on a 0.4% increase annually will amount to 15425 people within ward 02. Households are estimated to grown to 3391 by 2050.

LIST OF VILLAGES/ LOCATIONS/SUB AREAS	OTHER NAME/S FOR THE VILLAGE/ LOCATION	NUMBER OF HOUSEHOLDS			POPULATION SIZE (NUMBER OF PEOPLE)		
		Community Feedback	Census 2011	Projected Household by 2050 growing at 0.3% Per Annum	Community Feedback	Census 2011	Projected Population by 2050 growing at 0.4% Per Annum
Malubalube	N/A	216			816	1476	
Nkululekweni	N/A	556			1 672		
Rockville	N/A	860			2 170		
Maritseng	N/A	250			336		
Hardenberg	N/A	137			571	381	
Ramohlakoana	N/A	720			2 758	645	
Total Population - Ward 02:		2 739	3 072	3 391	8 323	13575	15 425

Table 4: Population Size and Distribution within the Ward – Community Based Planning Program 2017 (Data Collection)

4.1.2. Gender Distribution

The chart below depicts that 54% of the total population of Ward 02 are female. This is typical of most wards in Matatiele. This statistic also speaks to the table below on child headed households which indicates that there is a presence of female headed households within ward 02. *The growing distribution of females within the ward necessitates the provision of support for increased fertility demands and maternal support.*

GENDER DISTRIBUTION

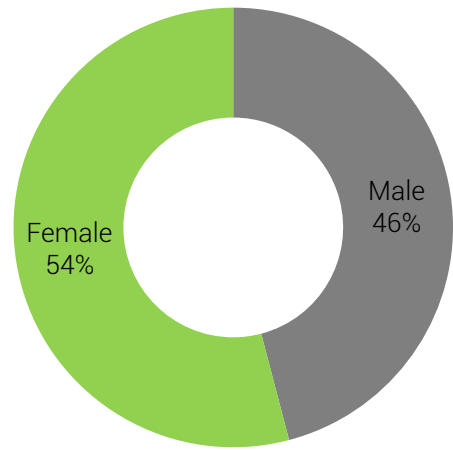


Figure 1: Gender Distribution

4.1.3. Age

The dominant age group in Ward 02 by younger people (00-19). There is a sharp decline in the number of people per age group from ages 20. This municipality certainly needs to invest more on educational institutions (schools, recreation facilities and crèches) and employment opportunities in order to attend to the needs of the youthful population.

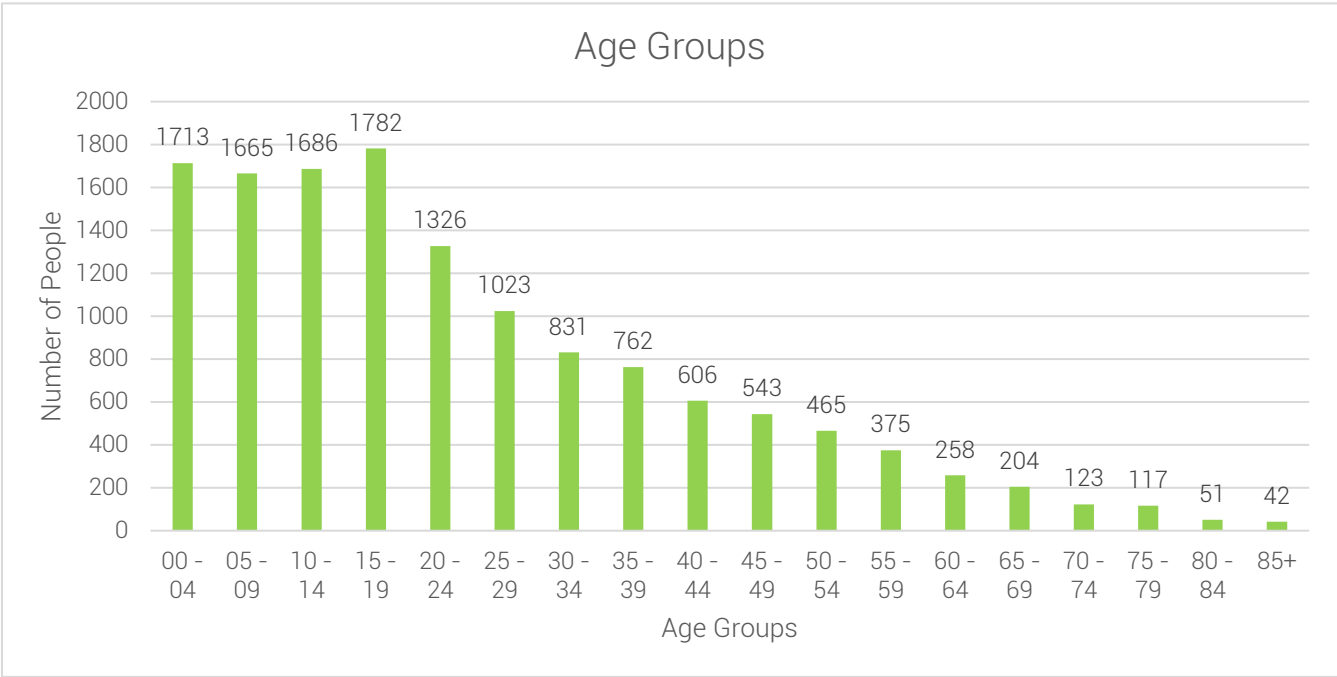


Figure 2: Age within Ward Distribution – Census 2011

4.1.4. Language Distribution

It is evident that the most spoken language in Ward 02 SeSotho followed by IsiXhosa. The language preference correlates to the racial split within ward 02 and is an indication of the language preference which people appreciate. The need to acknowledge and appreciate cultural diversity within Matatiele is thus an imperative.

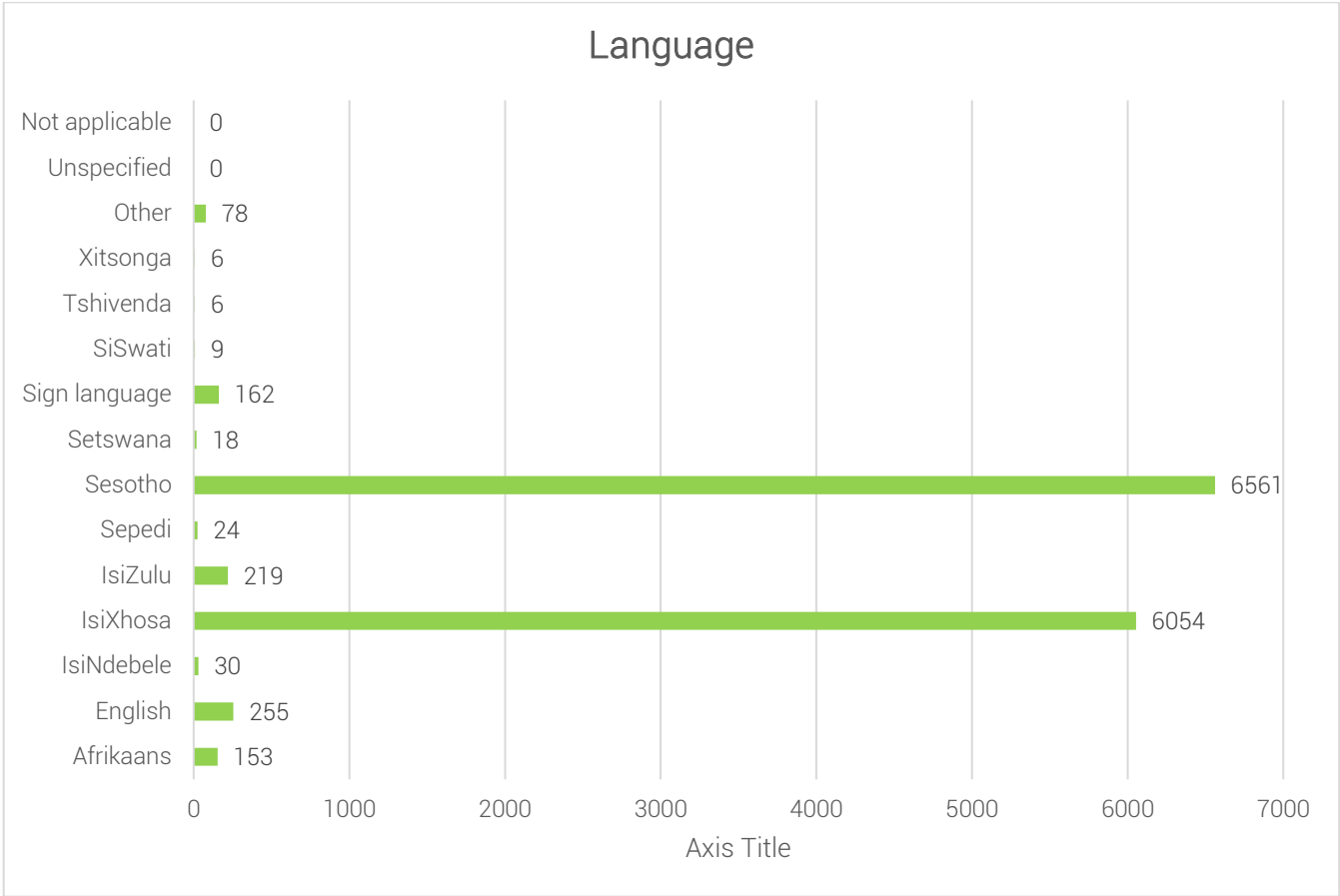


Figure 3: Language Proficiency within Ward – Census 2011

4.1.5. Social Grants

The dependency on grants within Ward 02 is a major challenge. The highest grant been for child support 1673 is in direct correlation with the majority female population. There is a need for consideration to be given towards old age care well as there are 434 households which receive old age grants.

TYPE OF SOCIAL ASSISTANCE OFFERED	NUMBER OF HOUSEHOLDS/PERSONS
	Community Feedback
Child support grant	1 673
Old age	434
Disability grant	129
Foster care grant	434
Grant in aid	
Stress relieve grant	

Food parcels	120
--------------	-----

Table 5: Social Grant Dependency within Ward - Community Based Planning Program 2017 (Data Collection)

4.1.6. Indigent Support

A rural municipality with a high dependency rate on social assistance; MLM has a large number of indigent households. Particularly for this ward, There a number of indigent households. Although the number is high, it is only a few households that receive indigent supports form the municipality. The challenges that affect to the provision of such support, include beneficiaries with no proper documents, challenges with verification of beneficiaries amongst other issues. The current indigent support register show that only 93beneficiaries for ward 02.

4.2. Household Profile

The section below details the natures of households within Ward 02 in terms of the sizes, genders of heads and distribution.

4.2.1. Average Household Size

The average household size within ward 02 is 4 persons per households.

4.2.2. Head of Household

The issue of child headed households remains a major challenge in Ward 02 and MLM. There is a need to prioritise support in the form of community awareness and social programmes in keeping with teenage pregnancy and family planning programmes..

Based on Census data we see that Malubelube has 156 Female headed households, Ramohlakoana has 69 female headed households and Hardenberg has 51 female headed households.



Villages	Child-Headed households		Female-Headed Households	
	Community Feedback	Census 2011	Community Feedback	Census 2011
Malubelube	23	0	09	156
Nkululekweni	01		09	
Rockville	02		06	
Maritseng	-		01	
Ramohlakoana	-	0	71	69
Hardenberg	-	0		51
Total	26		100	1629

Table 6: Child and Female Headed Households within the Ward - Census 2011

The graph below indicates that approximately 53% of households in ward 02 are headed by women.

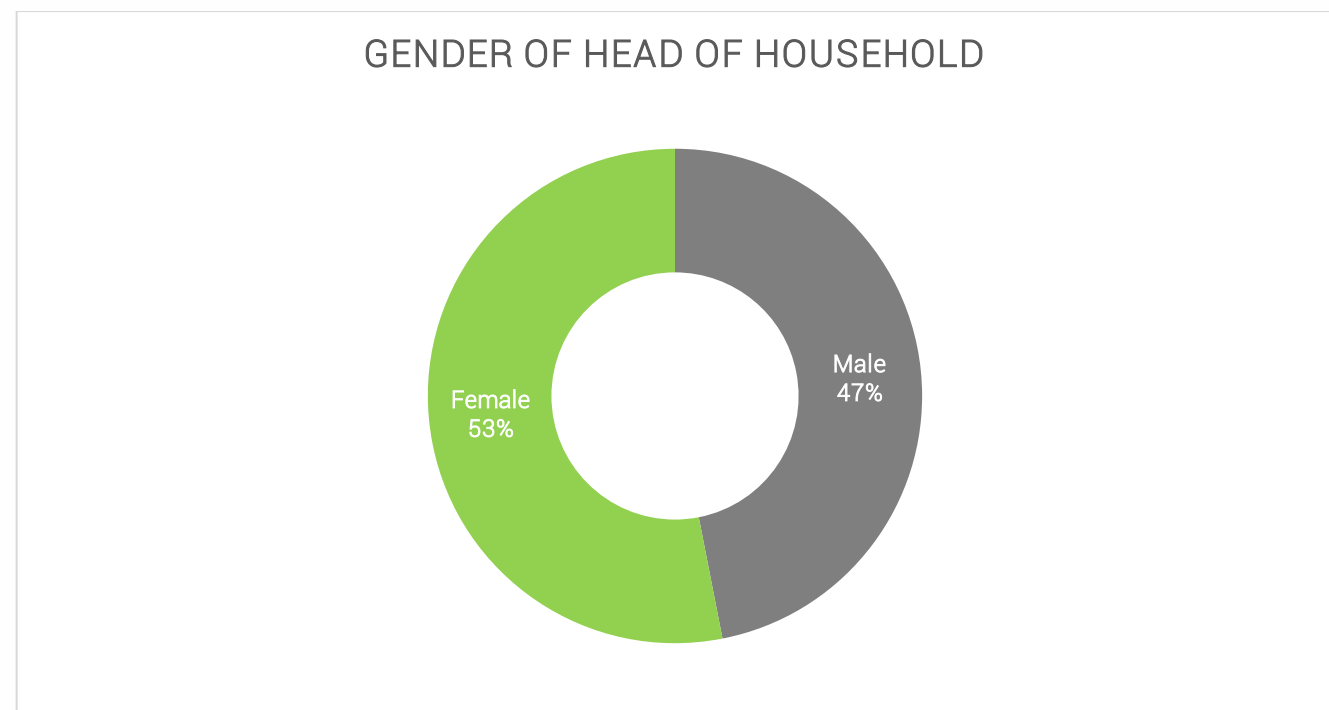


Figure 4: Gender of Household Head - Census 2011

4.2.3. Household Dwelling types

The majority (1146) of households in Ward 02 live in a house or brick structure. 423 people also live in traditional dwellings. The trend of traditional dwellings needs to be considered when developing building standards and regulation. The housing and backyard flats are a popular settlement feature within the Ward. *There needs to this be greater Land Use Planning By-Law enforcement to ensure that the type of development is controlled and manged.*

4.3. Social Profile

4.3.1. Education Facilities: Community Feedback

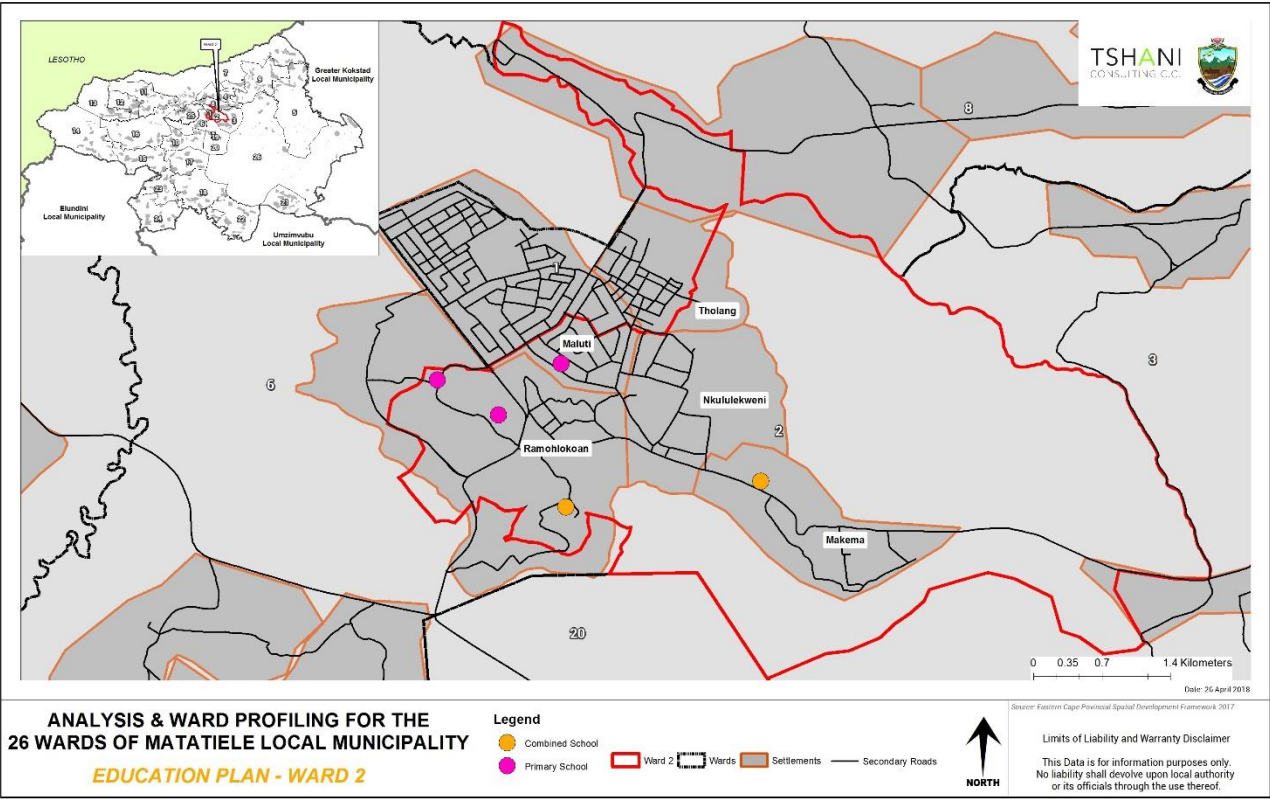
The range of schools identified in the table below was developed form the community feedback sessions.

NAME	TYPE	AREA LOCATED	NUMBER OF LEARNERS
Ramohlakoana J.S.S	Primary school	Ramohlakoana	420
Moliko S.P.S	Primary school	Ramohlakoana	185
Malubalube J.S.S	Primary school	Malubalube	413
Hardenberg J.S.S	Primary school	Hardenberg	937

Ramohlakoana Pre-school	Pre-school	Ramohlakoana	25
Khwezi Pre-school	Pre-school	Malubalube	30
Mapheleng Pre-school	Pre-school	Hardenberg	37
TOTAL		7	2 047

Table 7: Education Facilities within Ward - Community Based Planning Program 2017 (Data Collection)

4.3.2. Education Facilities:



Plan 2: Education Facilities

4.3.3. Level of Education

1194 people in ward 02 have completed grade 12. This is closely followed by 1014 people that have o schooling. The stats below indicate that there needs to be more focus on increasing the number of matriculants within the ward. There also needs to be emphasis on provision of employment opportunities for matriculants. These are partnerships that need to be fostered with the LM. The category of "not applicable" refers to pupils whom are younger than the school going age. It needs to be stressed that these children will eventually be in need of secondary and tertiary facilities which are currently absent within the ward.

4.3.4. Churches and Religious Organisations: Community Feedback

The range of religious facilities identified in the table below was developed form the community feedback sessions. There are 4 churches located in Ramohlakoana, 2 are located in Malubalube and 1 in Maritseng. The presence of religious organisations within the ward indicates that there is a demand for social activities.

NAME	LOCATION/AREA	NUMBER
Roman Catholic Church	Hardenberg	01
7 th Day Adventist Church	Ramohlakoana	01
St Johns Church	Ramohlakoana, Mapheleng	03
Zion Church	Ramohlakoana, Malubalube	04
Anglican Church	Malubalube	01
Jehovah's Witnesses	Maritseng	01
TOTAL		11

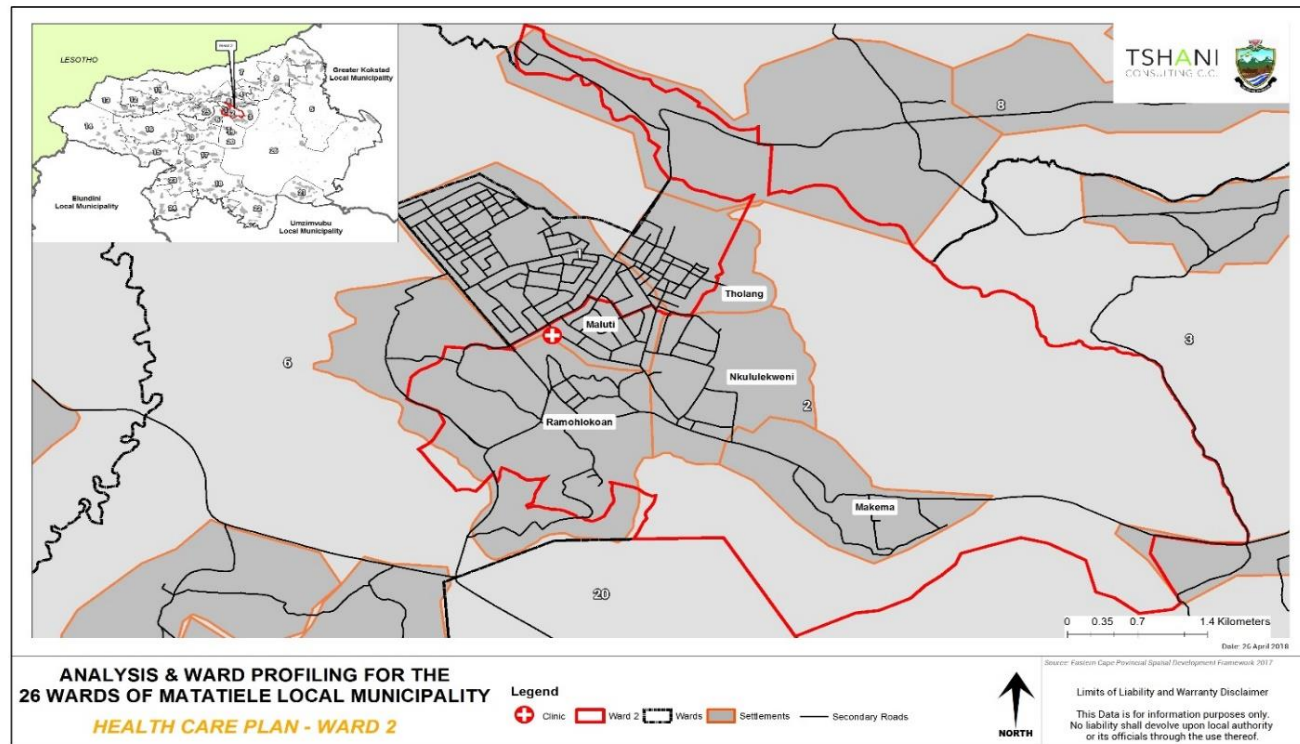
Table 8: Churches and Religious Organisations within the Ward - Community Based Planning Program 2017 (Data Collection)

4.3.5. Health Care Facilities: Community Feedback

The community feedback identified 2 health clinics within Ramohlakoana and Hardenberg. Health care facilities need to be opened 24 hours to service people at all hours of the day and night, especially for emergency situations.

Name and type	Area located	Primary services provided
Maluti Health Centre	Ramohlakoana, Maritseng	<ul style="list-style-type: none"> Primary health services. Including Immunization, Testing, Supply needy parents with milk for babies Family Planning
Roman Catholic Church Clinic	Hardenberg	

Table 9: Health Care Facilities: Community Based Planning Program 2017 (Data Collection)



Plan 3: Health Care facilities

4.3.6. Community Hall: Community Feedback

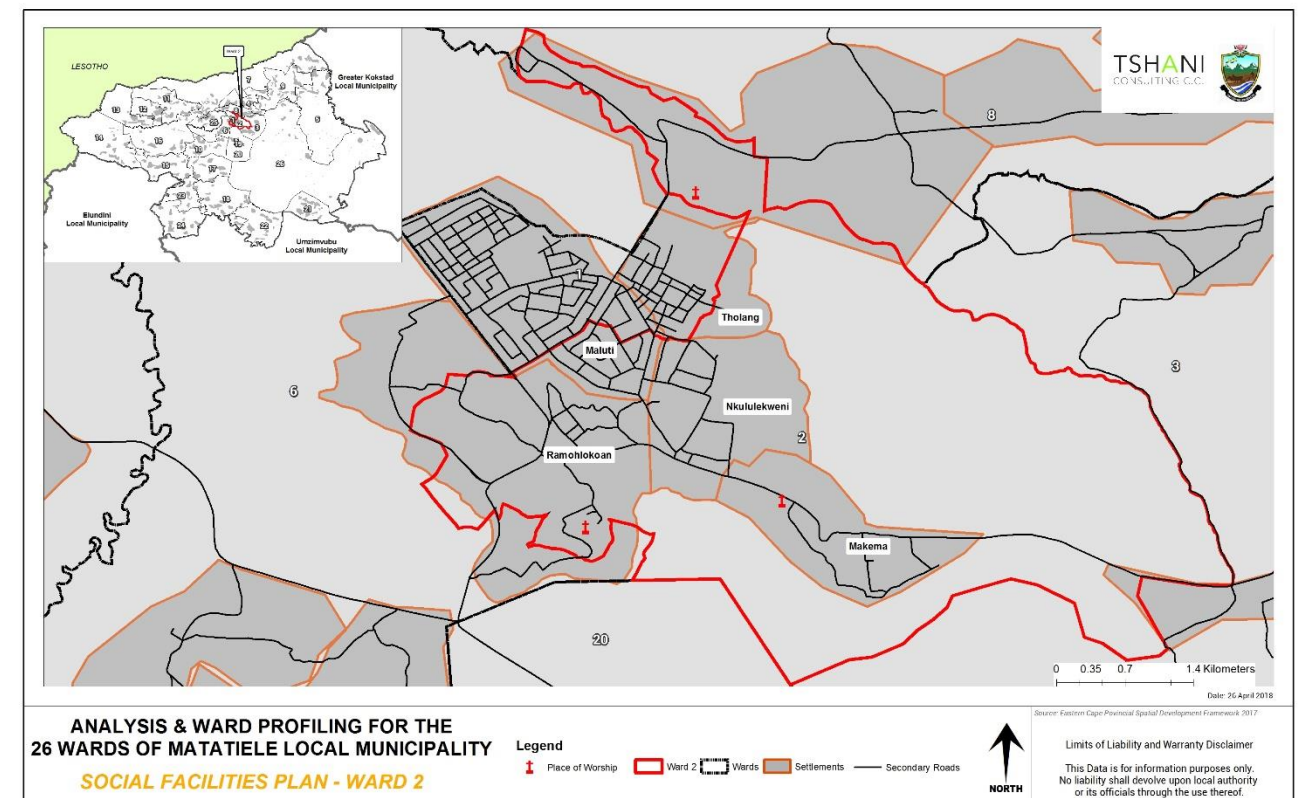
There are 2 community halls within the ward in Ramohlakoana and Hardenberg. The facility in Hardenberg was built by the community which is a great initiative to ensure ownership of projects.

Name and type	Area located
SASSA Hall	Ramohlakoana
Mapheleng Community Hall (Built by the community)	Hardenberg

Table 10: Community Halls - Community Based Planning Program 2017 (Data Collection)

4.3.7. Other Social Facilities

The map below spatially identifies places of worship and police stations.



Plan 4: Other Social Facilities

4.4. Economic Profile

4.4.1. Individual Monthly Income

Over half of the population of ward 02 receives less than R800 or no income monthly. This community has low to medium income earners.

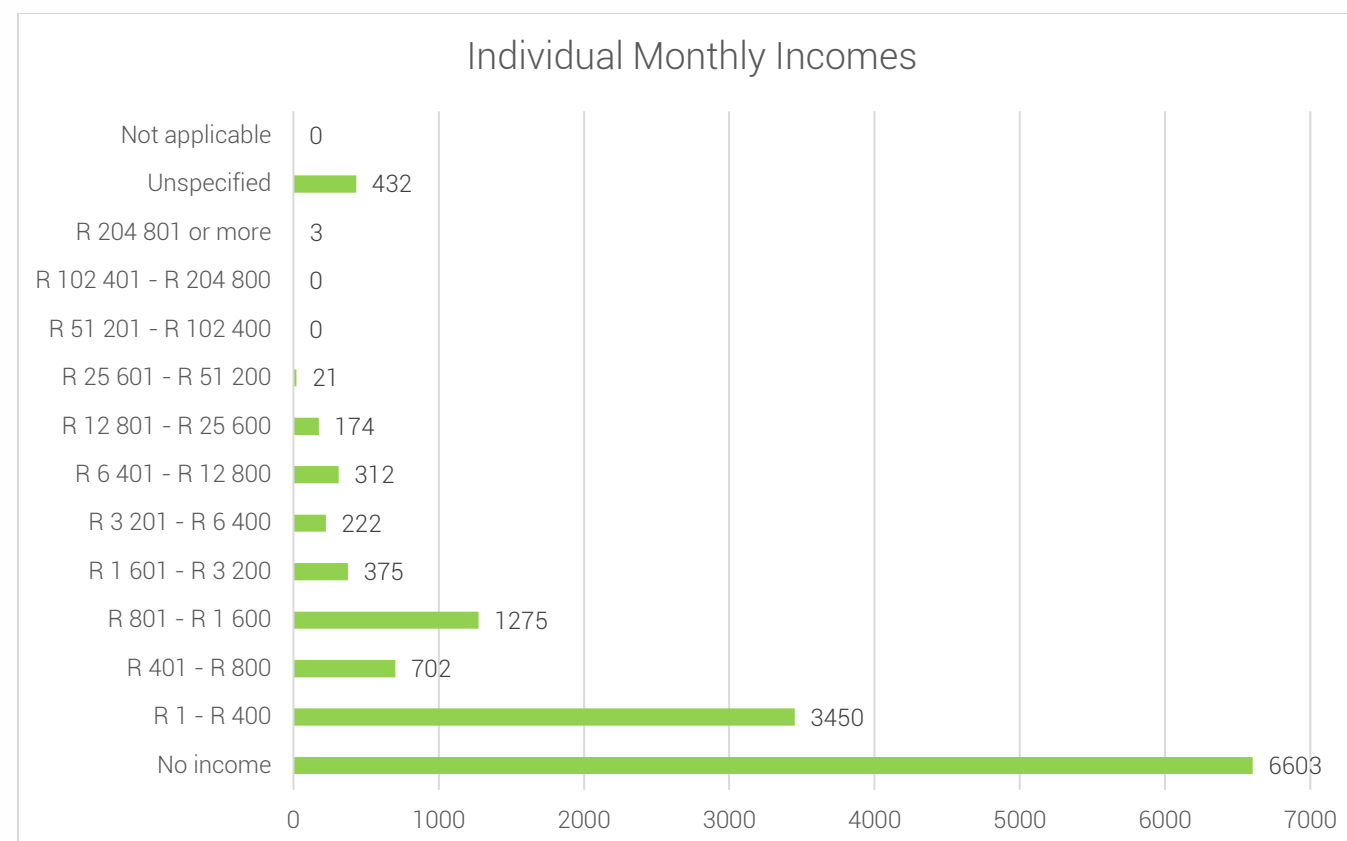


Figure 5: Individual Monthly Income - Census 2011

4.4.2. Economic Activities: Community Feedback

It is noted that spaza shops and taverns are the most dominant in ward 02. Four (4) facilities which retails alcoholic beverages were noted at Ward 02. This is very typical of areas with a very high unemployment rate and youthful populations. The issue with such a case is that practices of alcoholism and substance abuse become rife. The resultant social challenges facing such wards include criminal activity, teenage pregnancy, rape and addiction. A number of spaza shops and a hardware store were also recorded in ward 02 which is encouraging.

The LM needs to embark on more community awareness programmes and ensure there are social alternatives for youth within the villages as the present case indicate very poor recreation facilities. There is a need for focus to be placed on youth empowerment and education.

RETAIL(INDICATE SHOPS, SPAZA SHOPS, CAFÉ, TARVENS, SALONS, ETC)	
TYPE	LOCATION
Rasechaba Store	Ramohlakona
Masimini Trading Store	Matebeleng
Moreneng Trading Store	Moreneng
Madimong Trading Store	Madimong
Bafana Bafana Spaza Shop	Madimong
Anna Spaza Shop	Madimong
Manthathi Spaza Shop	Madimong
Marko Spaza Shop	Mapateng

John Spaza Shop	Matebeleng
Mhlobo We Nene Tarven	Matebeleng
Meriting Tarven	Madimong
Six to Nine Spaza Shop	Rockville
Mountain Rise Tarven	Motsetse
Moreneng Spaza Shop	Moreneng
MZimkhulu Spaza shop	Malubalube
Matshepo Spaza Shop	Malubalube
Arha Shame Shop	Malubalube
Maritseng Spaza Shop	Maritseng
Sizamele Shop	Nkululekweni
Mapholing Tarven	Nkululekweni
Nkululekweni Spaza Shop	Nkululekweni
C.C Trading(Hardware)	Nkululekweni

Table 11: Economic Activity - Community Based Planning Program 2017 (Data Collection) Tourism Activities

4.4.3. Tourism Activities

There I just one B&B in ward 02. The indication of tourism facilities present indicates that there is room for growing a broader tourism base within Ward 02.

TOURISM (INDICATE B&B'S, HOTELS, ATTRACTION SITES, ETC)	
TYPE	LOCATION
Dula le Rona (B&B)	Ramohlakoana

Table 12: Tourism Activities - Community Based Planning Program 2017 (Data Collection)

4.4.4. Agricultural Activities

The agricultural activities within Ward 02 include mainly subsistence related activities which take place at a household level. The agricultural activity within the ward requires attention. There is an opportunity for ward 02 to provide value add mechanisms to the agricultural products and offer support to neighbouring wards in order to ensure agricultural sectors with potential thrive.

TYPE	ACTIVITY IN HOUSEHOLDS	ACTIVITY IN FARM
Cattle	Yes	
Sheep	Yes	
Goats	Yes	
Horses	Yes	
Poultry	Yes	
Vegetables	Yes	
Fruits	Yes	

Grains	Yes	
--------	-----	--

Table 13: Agricultural Activities - Community Based Planning Program 2017 (Data Collection)

4.4.5. Products Produced in Wards

The table below indicates that a range of produce and clothing are available within the ward that are locally produced. Such individuals responsible for these activities should be better supported and encourages to expand. *The LED directorate of the municipality needs to actively try to open market opportunities for such traders to ensure that they can participate in the local economies. The products produced within the ward need not confine its footprint to the Ward and rather needs to look at cross-border product provision.*

TYPE OF PRODUCTS	AREAS / VILLAGES	FOR HOUSEHOLD CONSUMPTION	FOR SELLING TO THE COMMUNITY
Beans	Ramohlakoana	Yes	Yes
Maize	Ramohlakoana	Yes	Yes
Sewing (clothing)	Ramohlakoana Malubalube NKululekweni		Yes
Vegetables	All Villages	Yes	Yes

Table 14: Products produced within the Ward

4.4.6. Existing Skills

The ward constitutes of some diverse skills which is a major asset for the ward. Such individuals need to be further trained and opportunities to mentor other unemployed individuals within the community should be encouraged. The entrepreneurs within ward should also be given better access to market opportunities. There a broad range of professionally qualified individuals whom also are major assets for Ward 02.

TYPE OF SKILLS	EXISTING (INDICATE WITH YES/NO)	TYPE OF SKILLS	EXISTING (INDICATE WITH YES/NO)
Carpenters	Yes	Pottery	No
Plumbing	Yes	Teachers	Yes
Builders	Yes	Police	Yes
Artists	Yes	Health officials	Yes
Gardening	Yes	Accountants	Yes
Cooking	Yes	Engineers	Yes
Sewing	Yes	Lawyers	Yes
Writing	Yes	Other (indicate)	
Drivers	Yes		
Farmers	Yes		

Table 15: Existing Skills within the Ward: Community Based Planning Program 2017 (Data Collection)

5. Built Environment Assessment

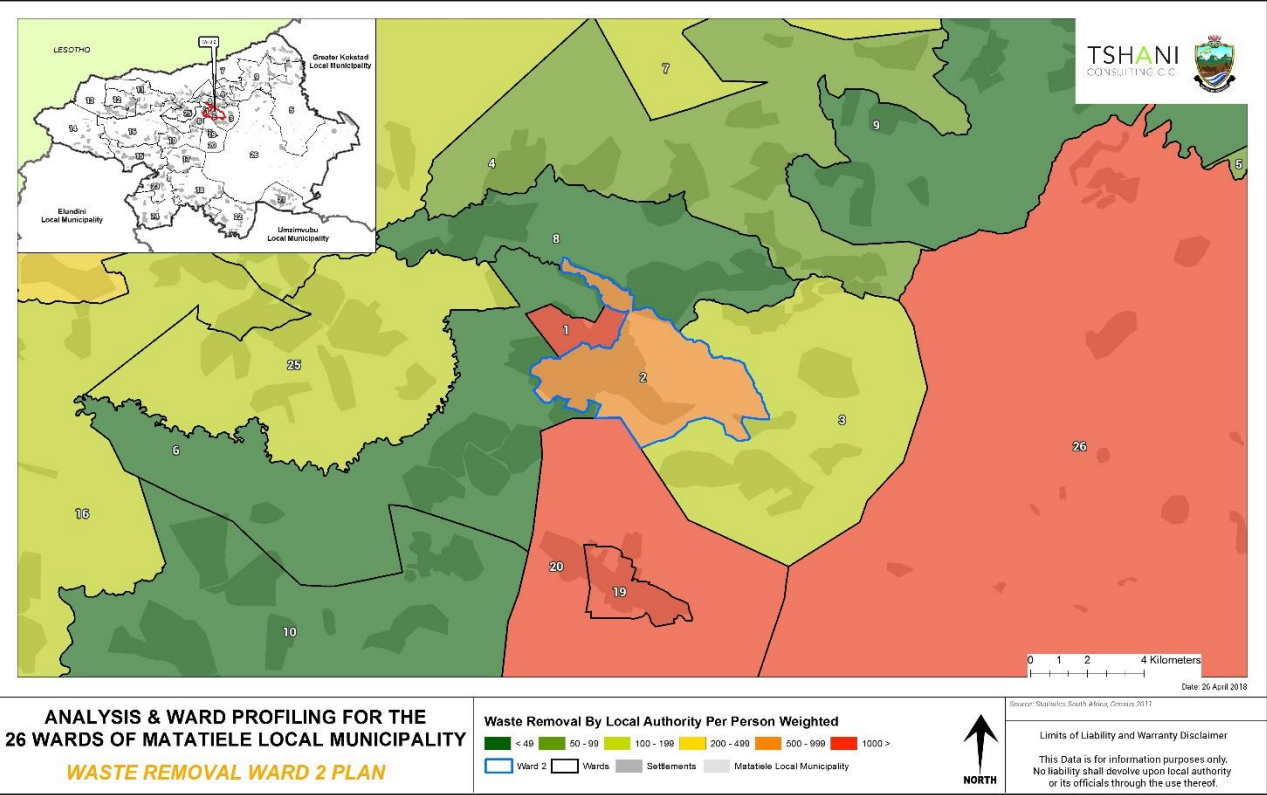
5.1. Access to Waste Removal

The community feedback session presented that there were no waste removal services within the Ward. The municipality does not provide waste removal services in this ward. Households make use of their own means to dispose off waste.

The local municipality needs to increase its provision of waste collection services to this ward. Waste dumping is a hazard to human health and the natural environment.



Figure 6: Access to Solid Waste Removal - Census 2011



Plan 5: Access to Waste Removal - Census 2011

5.2. Access to Water

The main supply of water in ward 02 is from the district municipality. The issue which accompanies this method is the maintenance of the existing infrastructure.

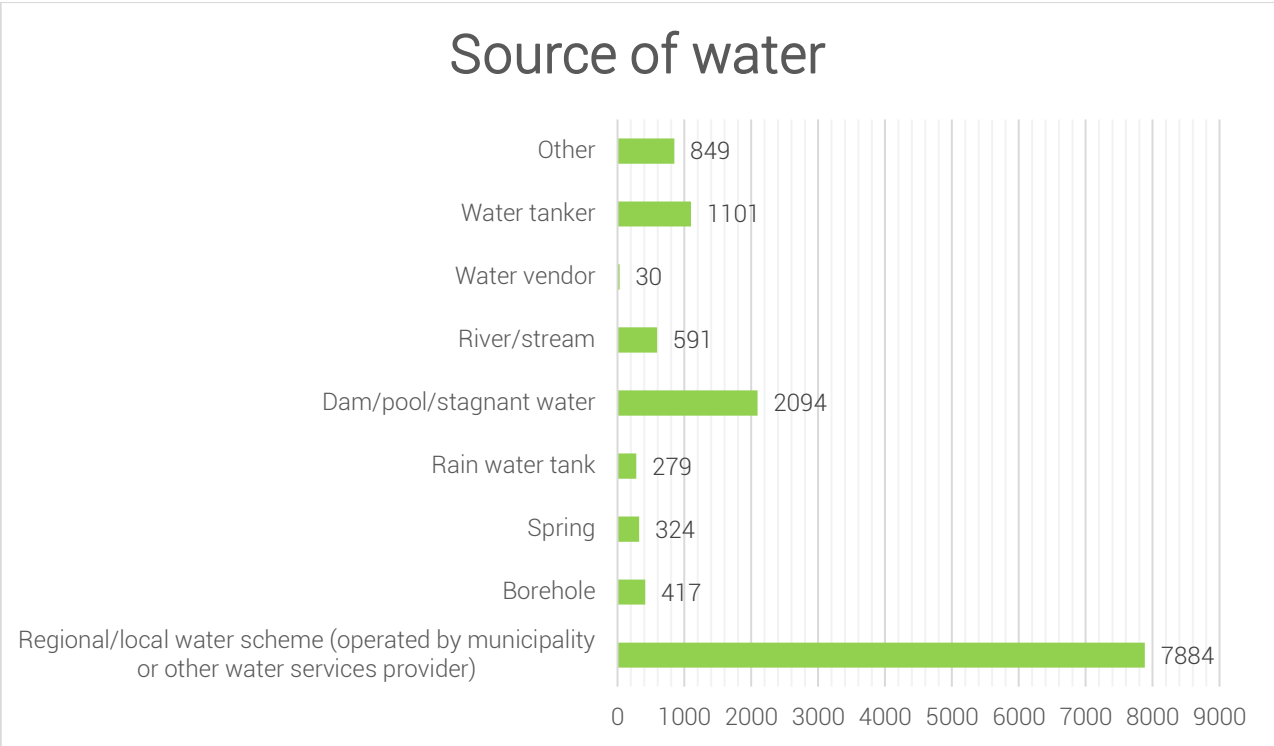


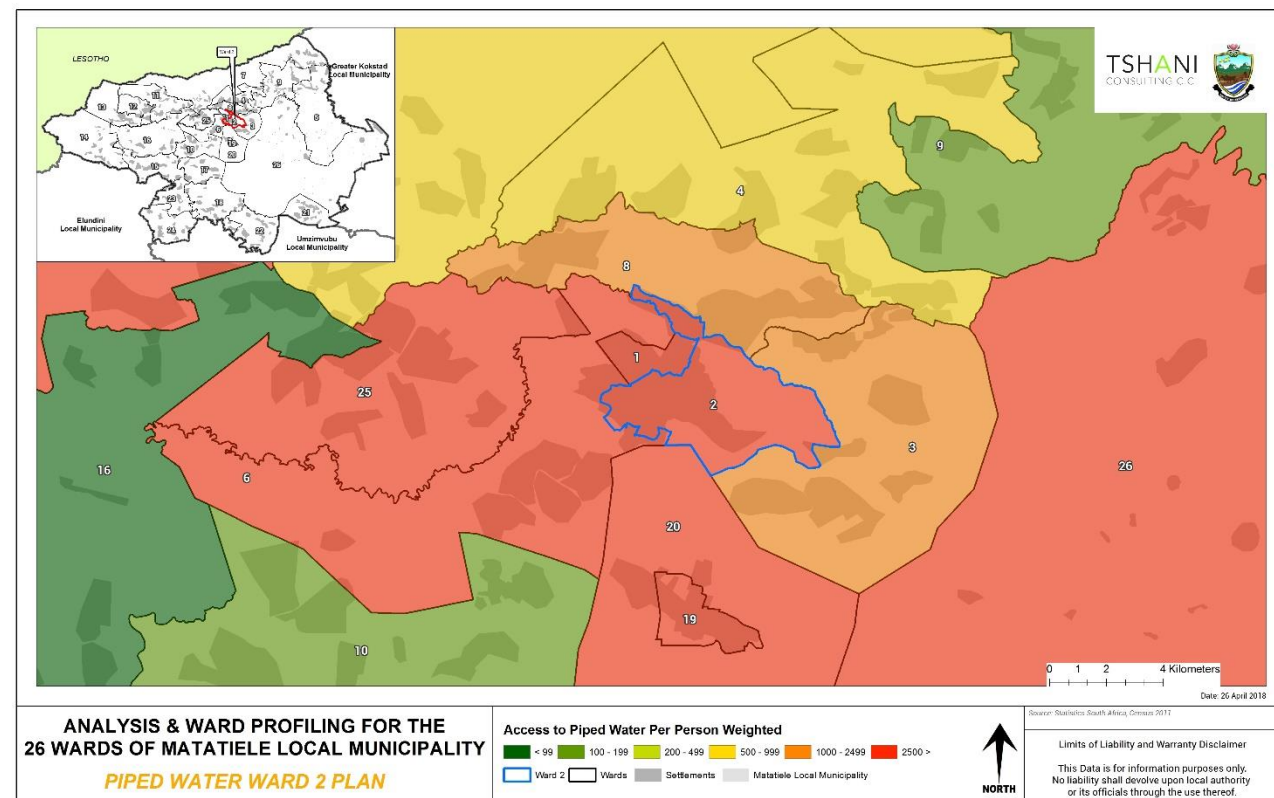
Figure 7: Source of Water supply within the Ward - Community Based Planning Program 2017 (Data Collection)

5.3. Access to piped water

VILLAGE/LOCATI ON	COMMUNITY TAPS	WATER- INSIDE YARD	WATER- INSIDE HOUSE	BOREHOLE S	DRAW WATER FROM STREAMS, DAMS, RIVER
Ramohlakoana	23	77	28	04	
Malubalube	12	69	02		
Nkululekweni	08	29			
Hardenberg					137
Rockville	10	36			
Motsetse	03	52		01	
Maritseng	12	180			

Table 16: Access to Piped Water within the Ward – community based planning data collection(2017)

Additional notes:
Mapheleng:some of community members use a water tanks.



Plan 6: Access to piped water within the Ward - Census 2011

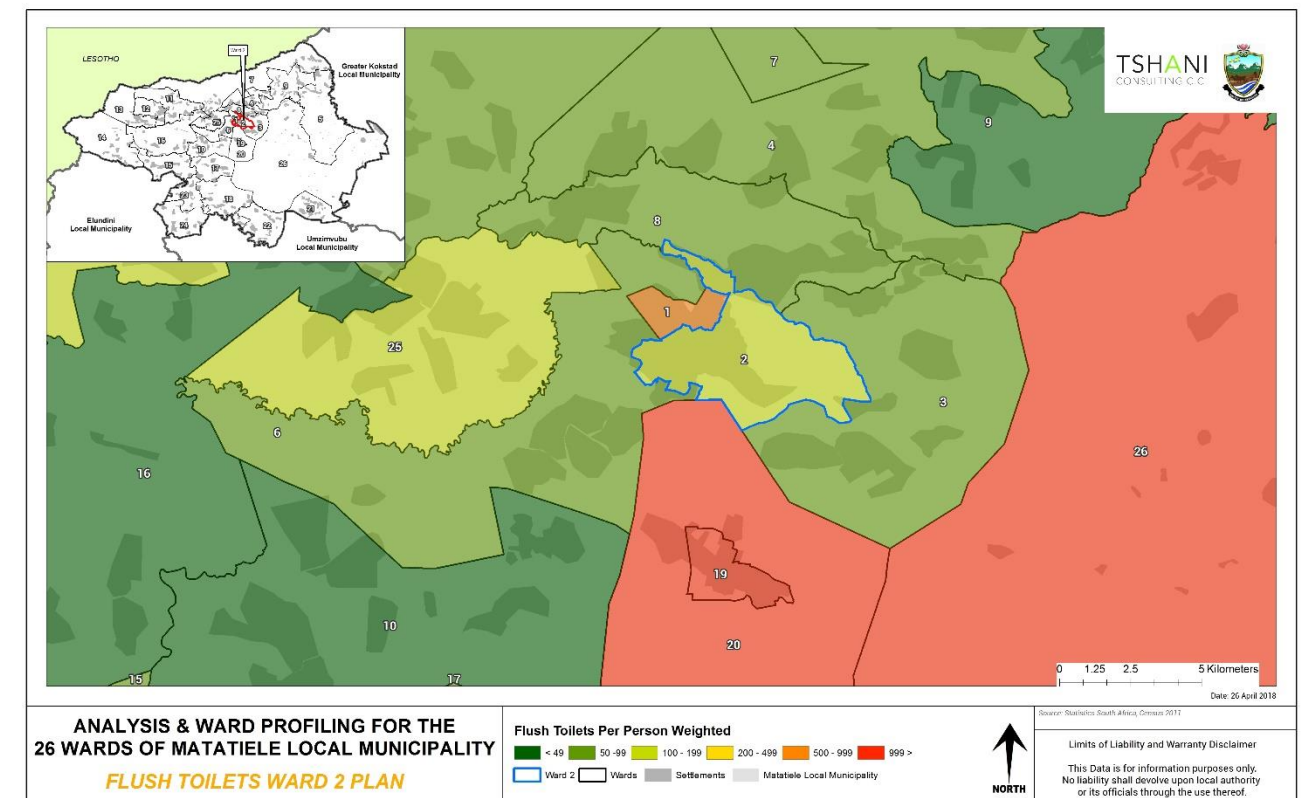
5.4. Access to Sanitation

The levels of sanitation which characterise Ward 02 is of a poor standard. A large number of households still need toilets. Pit latrines are both unhygienic and dangerous, these sanitation facilities are also an environmental hazard as they contaminate the ground water and soil which leads to the outbreak of diseases like Cholera. The map below illustrates that more than between 100-200

The municipality needs to consider cost effective means to improving sanitation levels through flush toilets which are connected to the municipal system or pour flush toilets. A very significant number of people use pit toilets, the municipality should decrease this drastically to avoid social and environmental impacts.

VILLAGE/LOCATION	VENTILATED PIT TOILETS	FLUSH TOILETS	OTHER
Malubalube	189	02	30
Nkululekweni	273		131
Ramohlakoana	385	25	380
Hardenberg	103		34
Rockville	180	04	742
Motsetse	33	04	68

Table 17: Access to Sanitation – community-based planning 2017



Plan 7: Access to Flush toilets - Census 2011

5.5. Main source of Energy within the Ward: Community Feedback

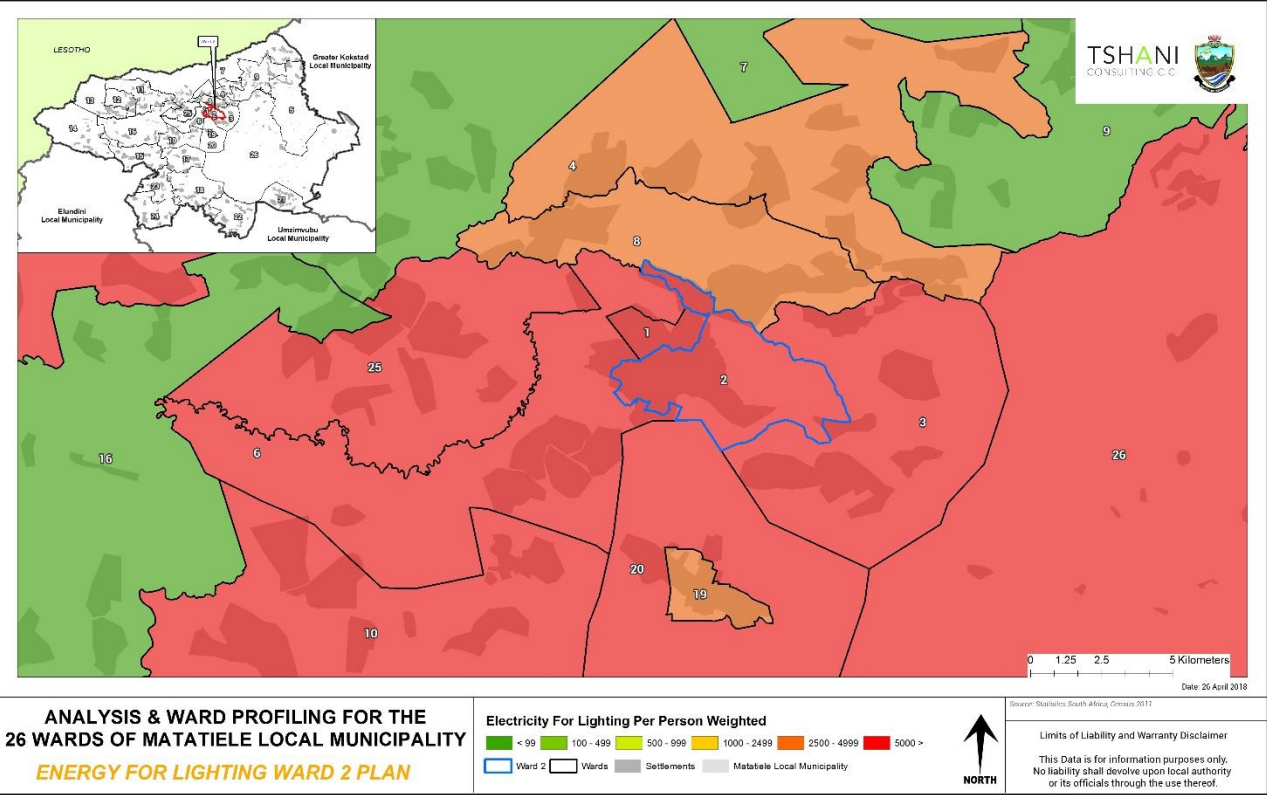
The main source of energy within Ward 02 is electricity. This indicates that the level of service within the ward is relatively high. The analysis below further reiterates the status of electrification within the ward based on categories of lighting, heating, and cooking.

VILLAGE/LOCATION	ELECTRICITY	SOLAR	NO ELECTRICITY/SOLAR
Ramohlakoana	1230		
Malubalube	183		
Nkululekweni			556
Hardenberg	103		34

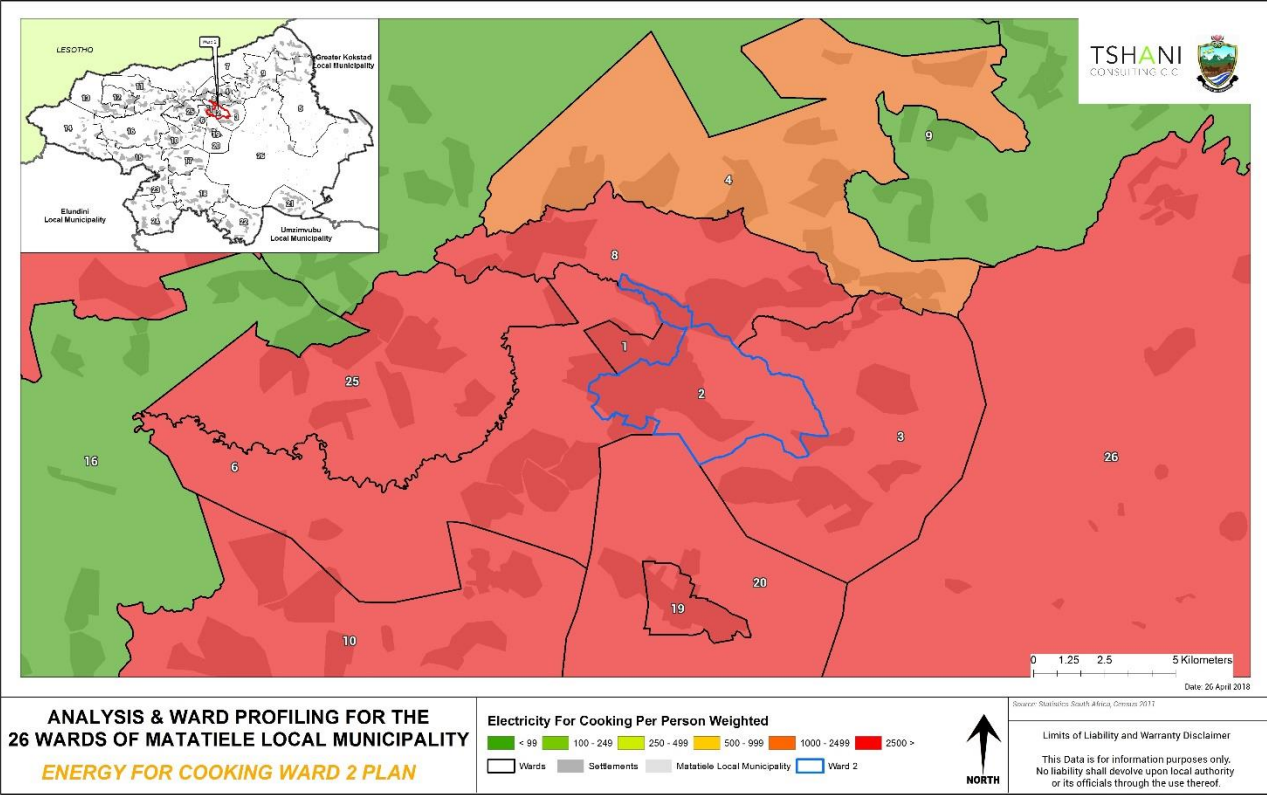
Table 18: Source of Energy within Ward – community-based planning 2017

5.6. Main Source of Energy for Lighting

Majority of the people within the ward use electricity for lighting. A very few people are reliant on paraffin (1929) and candles (1977) for lighting. *The local municipality should encourage the community to use solar energy and assist the process by educating communities of renewable energy.* Nkululekweni village is the only village in the ward that does not have Electricity.



Plan 8: Use of electricity for Lighting within the Ward - Census 2011



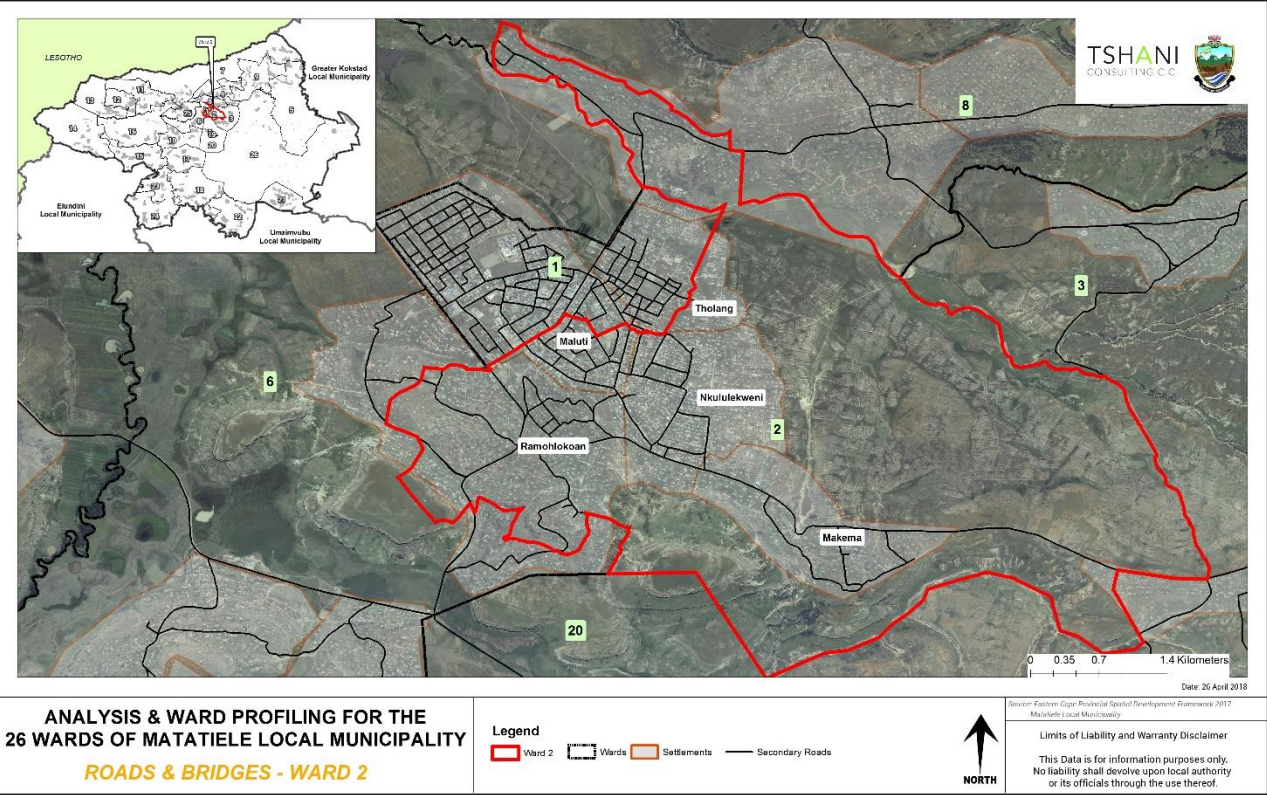
Plan 9: Access to Electricity for Cooking - Census 2011

5.7. Roads and Bridges

The roads and bridges located within Ward 2, however they need maintenance. Malubalube has roads which are in good condition. However, roads in Hardenberg and Ramohlakoana are in a bad state and need upgrades and maintenance.

NAME AND TYPE	AREAS COVERED	CONDITION OF THE ROADS
Moliko Access Road	Ramohlakoana, Rockville	Bad condition
Malubalube Access Road	Ramohlakoana, Malubalube	Bad condition
Maralekeng Access Road	Hardenberg, Maralakeng	Bad condition
Hardenberg Bridge	Hardenberg	Bad condition
T12 Road	Ramohlakoana	With potholes
T13 Road	Hardenberg	Bad condition

Table 19: Roads and Bridges within the Ward - Community Based Planning Program 2017 (Data Collection)



Plan 10: Roads and Bridges within the Ward - MLM GIS

6. Current Projects

The following table highlighted the key projects which have been identified by the community The current projects are mainly linked to co-operative ventures. Further projects need to be targeted towards building a local economic base, skills development and spatial resilience.

PROJECT/PROGRAMME NAME	STATUS	WHO IS RESPONSIBLE
Ikaheng Protea Project	Operational	Phapang Nqhome
Boiteko Cleaning Service Co-Operative	Operational	Nomfundo Gcwabe
Khuthalani Sinosizo	Operational	Thandeka Matiwane
Basadi Baya Iketsetsa	Operational	Maikga Kanunu
Hlabolla Co-Operative	Operational	Lesley Ratefane

Table 20: Current Projects - Community Based Planning Program 2017 (Data Collection)

7. Ward Needs and Priorities

The need and priorities which have been identified need to be prioritised in the municipal SDF and other local plans created. The projects range from short to long term projects and have been further broken down in the implementation plan. The ward priority plan also identifies the locations of priority provincial projects which are located within ward 02. There are projects which are present for human settle

VILLAGE/LOCATION/ SUB AREA	NEEDS IDENTIFIED
Rockville	Electricity ,Water, drainage pipes in the area to prevent flooding, Dipping tank ,preschool, sanitation, access road (Tsenyane-Rockville), dipping tank, pre-school, sports field
Katlehong	Electricity, water, access road to Katlehong, access road to the grave site, RDP Houses, access road (Maralakeng to Katlehong), sanitation
Maritseng	Community hall, electricity in-fills, Moreneng pre-school to be revived, pre-school, water, access road and sport field.
Mapateng	Access road from Golden to be maintained, bridge is in a bad condition, water, toilets in-fills, sports field, community hall, Mobile clinic, access road (Meriting to Ramatli), electricity in-fills, poultry project funding, street lights, Mapateng dam fencing, Apollo lights
Nkululekweni	Electricity, water, access road re-gravelling, fencing of grave sites, RDP Houses, sports field, pre-school, Sanitation renovation, old age home, poultry project funding.
Malubalube	Maintainance of Malubelube access road; ngaphezulu, RDP Houses, Community hall, pre-school maintenance, access road from the T-Road maintenance, Electricity infills, Carpentry project funding, toilets, Sports field, renovation of vegetable project.
Hardenberg	Bridge to grave site, Fencing of grave site in Hardenberg, electricity in-fills, Bridge to Grave yard, sports field, water extension, fencing of a graveyard, Youth development, Toilet in-fills, access road maintenance, (Kwadada to Maralakeng)
Ramohlakoana	Sanitation project to be completed, Public transport from town, skills centre, Apollo lights, maize meal milling project funding, furniture for SASSA hall, Motsetse Borehole maintenance, access roads, Apollo lights at Pre-school, speed humps next to garage, sidewalks (Matebeleng to Ramahlokoana Bridge (Mashapa to graveyard), electricity in-fills.

Table 21: Ward Needs - Community Based Planning Program 2017 (Data Collection)

WARD 02	
INFRASTRUCTURE PRIORITIES	SOCIO- ECONOMIC PRIORITIES
Electricity	Rehabilitation Centre
Water	Skills Centre
New Access road and maintenance	Farming initiatives
RDP Houses	SMME support
Skills Centre	Bursaries, learner ships and internships for unemployed youth.

Table 22: Ward Priorities - Community Based Planning Program 2017 (Data Collection)

8. Stakeholder within Ward

The table below highlights the stakeholders which were engaged with during the Community engagement sessions.

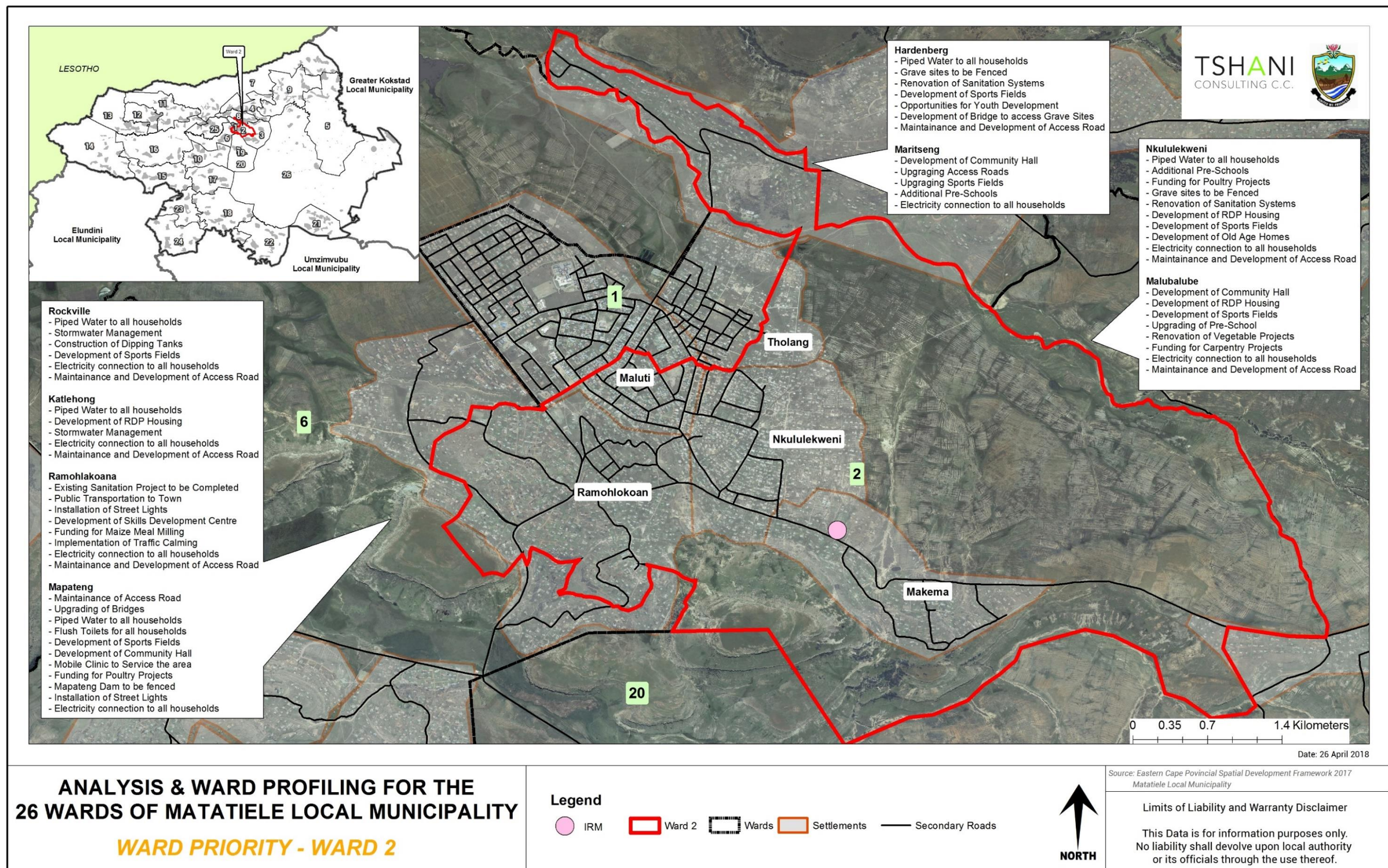
NAME OF STAKEHOLDER	CONTACT PERSON AND TEL
Youth forum	Bongeka-063 175 2344
Disability	Lucky Jafta-078 589 3552
EPWP	Phapang Nqhome-073 538 7500
Church Council	Seiso Moso-071 081 0128
Business	Mr Mcengce-083 925 4232
Basadi Baya Iketsetsa	Moso Fumane-073 713 1376
Ward Committees	Neliswa Mokhele-073 628 3311

Table 23: Stakeholder within Ward – Community Based Planning Program 2017 (Data Collection)

9. Social Challenges within Ward

CHALLENGES IDENTIFIED	AFFACTED AREAS	IMPACT
Crime	All villages	Physical and emotional reactions, people live in fear
Stock theft	All villages	Caused poverty amongst the communities
Alcohol and drug abuse	All villages	Lead to mental inbalance to consumers Conflicts leading to murder Users do house breaking
Identity Documents	All villages	Affect children at schools People don't get job opportunities

Table 24: Social Challenges within Ward – Community Based Planning Program 2017 (Data Collection)



Plan 11: Ward Priority Plan